

ELITE Award for Community Stewardship

[Cooperative Design Resource]

Community Stewardship is a new award category recognizing what a company has done to make a difference in the community. Projects may be industry related or non-industry related activities, such as participating in an event that raises funds for a cause or providing charitable services. Finalists show passion and commitment to service and lead by example by carrying out, or participating in, community service projects.

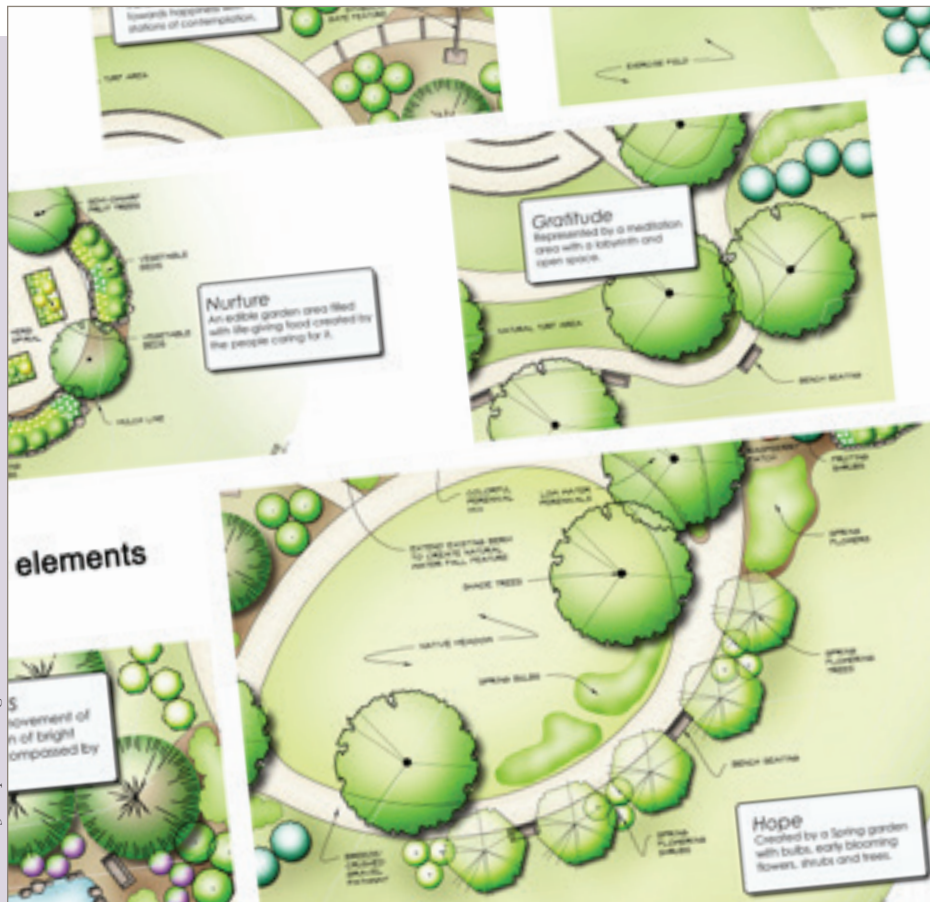
Cooperative Design Resource (CDR), Centennial, received the ELITE Award for Community Stewardship. CDR designed a healing garden for the Veterans Affairs Domiciliary Home in Lakewood. It is a place many returning veterans called home while learning the necessary skills needed to re-enter society post-service. During the design process, CDR worked hand in hand with veterans of all ages and disabilities. Those veterans contributed to the design process by adding their own ideas and by choosing which elements to implement in the final project. The final design included a healing garden using low water, food-providing and native plants.

The strongest element of this project was the commitment of time and the collaboration with the veterans to the seven “stations of healing.” These spaces were created in separate areas within the landscape and have special meaning to the veterans: hope, empowerment, gratitude, happiness, respect, forgiveness and nurture.



Photo courtesy David Winger Landscape Photography

Terry Rudolph, Tom Trench and Jennifer Verprauskus, Cooperative Design Resource



Healing garden plan

[Finalists]

Swingle Lawn, Tree & Landscape Care | Making Spirits Bright program

Swingle Lawn, Tree & Landscape Care created “Making Spirits Bright” to help families facing hard times during the holidays. They asked for nominations and received more than 50. Swingle chose two families and worked with them to design and install custom holiday light displays for their homes.

Terracare Associates | Columbine Memorial Foundation

Terracare Associates leads, and is involved in, many community volunteer projects year round. The company community goal is aligned with green education, outdoor beautification projects and a variety of events and sponsorships that directly support local companies, municipalities and counties that they service. Terracare’s signature project is the Columbine Memorial. Each year, the company offers more than \$7,000 of in-kind services, supplies, expertise and equipment to keep the memorial in pristine condition at all times.